



Comité économique et social européen
European Economic and Social Committee

A Life-Course Approach to the Health of Women and their Families

Cervical cancer prevention: a matter of equity

Prof Marc Bardou

MD, PhD

University Hospital Dijon-Bourgogne, France

4 December 2017

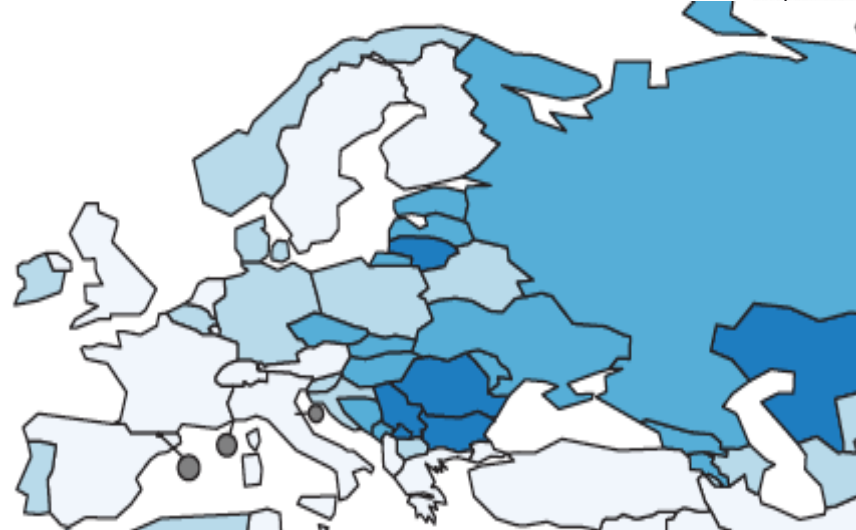
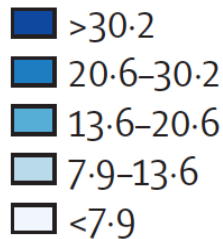
European Economic and Social Committee

Brussels, Belgium

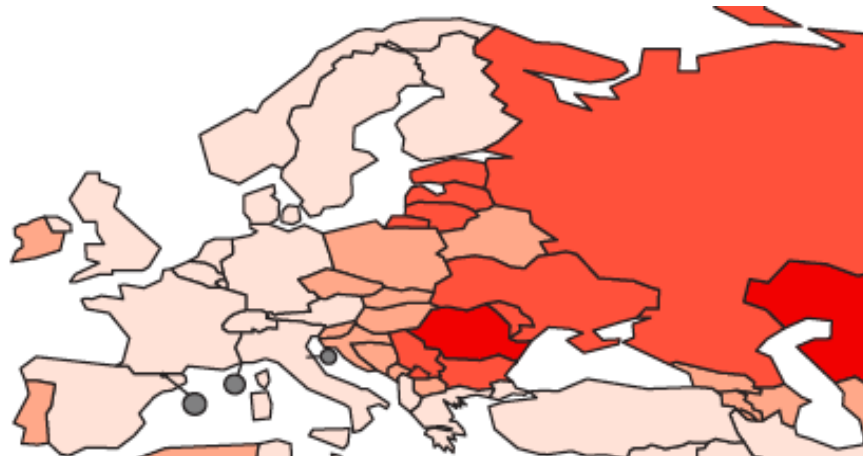
Celebrating 21 Years of Setting the Agenda in Women's Health

Background

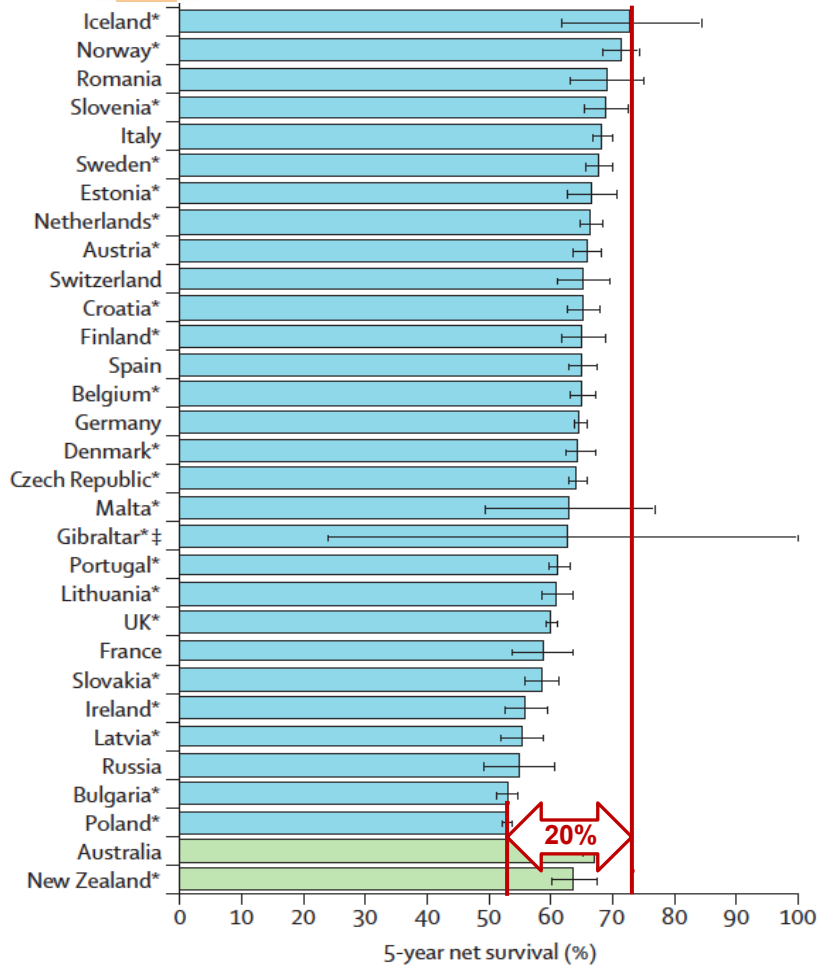
**Cervical cancer
incidence rate
per 100000 women**



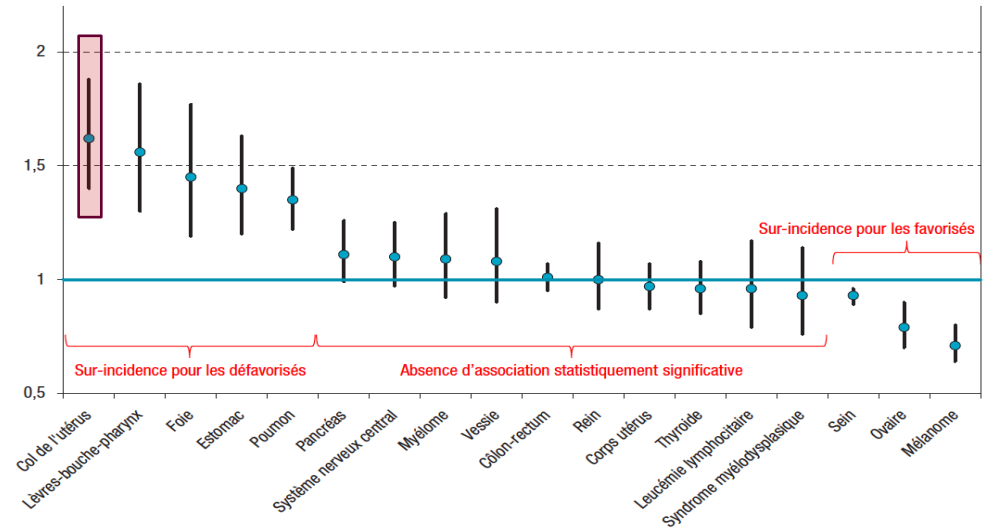
**Cervical cancer
mortality rate
per 100000 women**



Central Issues



Le risque relatif de cancer dans la catégorie la plus défavorisée par rapport à la catégorie la plus favorisée dans les registres du réseau Francim entre 2006 et 2009 – Femmes
Risque relatif catégorie 5 / catégorie 1



Deprivation Index

Q0-1 (less deprived)

Réf : 1,00

Q1-Q2

0,874 [0,817-0,936]

Q2-Q3

0,807 [0,756-0,862]

Q3-Q4

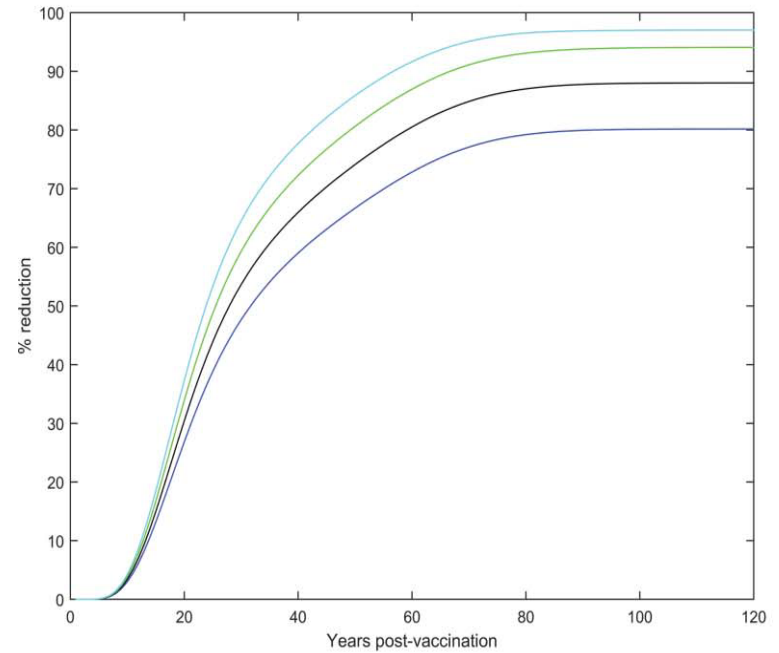
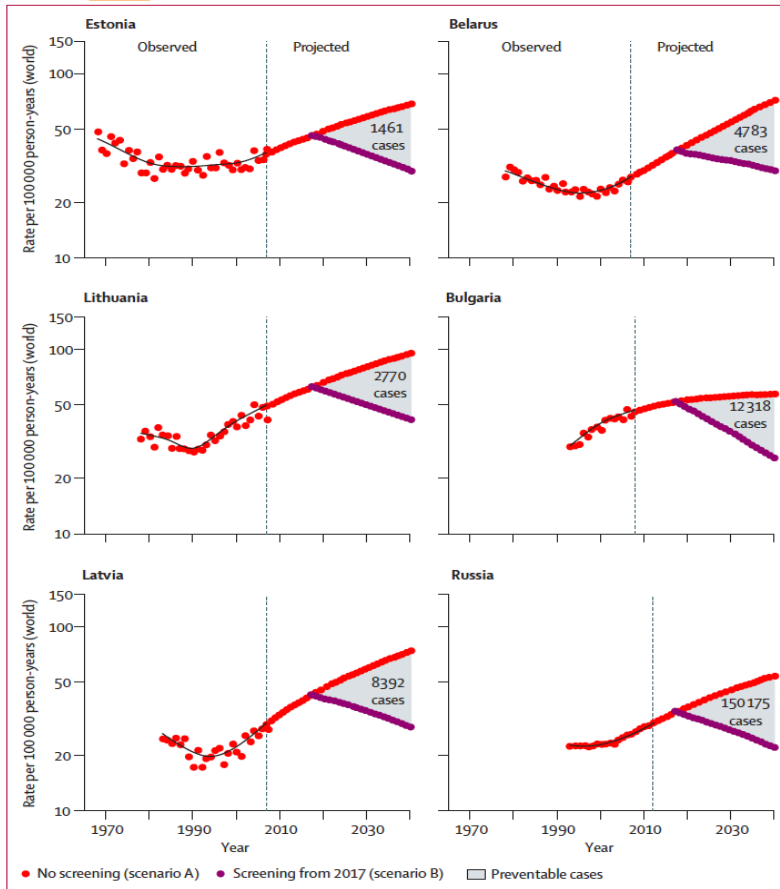
0,706 [0,662-0,753]

Q4-Q5 (plus défavorisé)

0,566 [0,532-0,601]

Ginsburg, O., et al. *Lancet* 2017 389(10071): 847-860.

Recommendations



(b) Impact of vaccination on CC, with varying UMV coverage. Blue: 70%; Black: 80% (base-case); Green: 90%; Cyan: 100%. The plot shows the pooled outcome across all the oncogenic HPV types considered in the model.

Van Effelterre, T. P., et al. *Hum Vaccin Immunother.* 2016;12(1):8-19

Altobelli, E. (2016). *Lancet Oncol* 17(10): 1349-1350.

Recommendations

